

Collaboration in Action:
Community-driven projects for environmental problem solving

PublicLab.org | [@PublicLab](https://www.instagram.com/PublicLab) | [@sdosemagen](https://www.instagram.com/sdosemagen)







St. Rose, LA. Photo for YES! Magazine by Marc Pagani

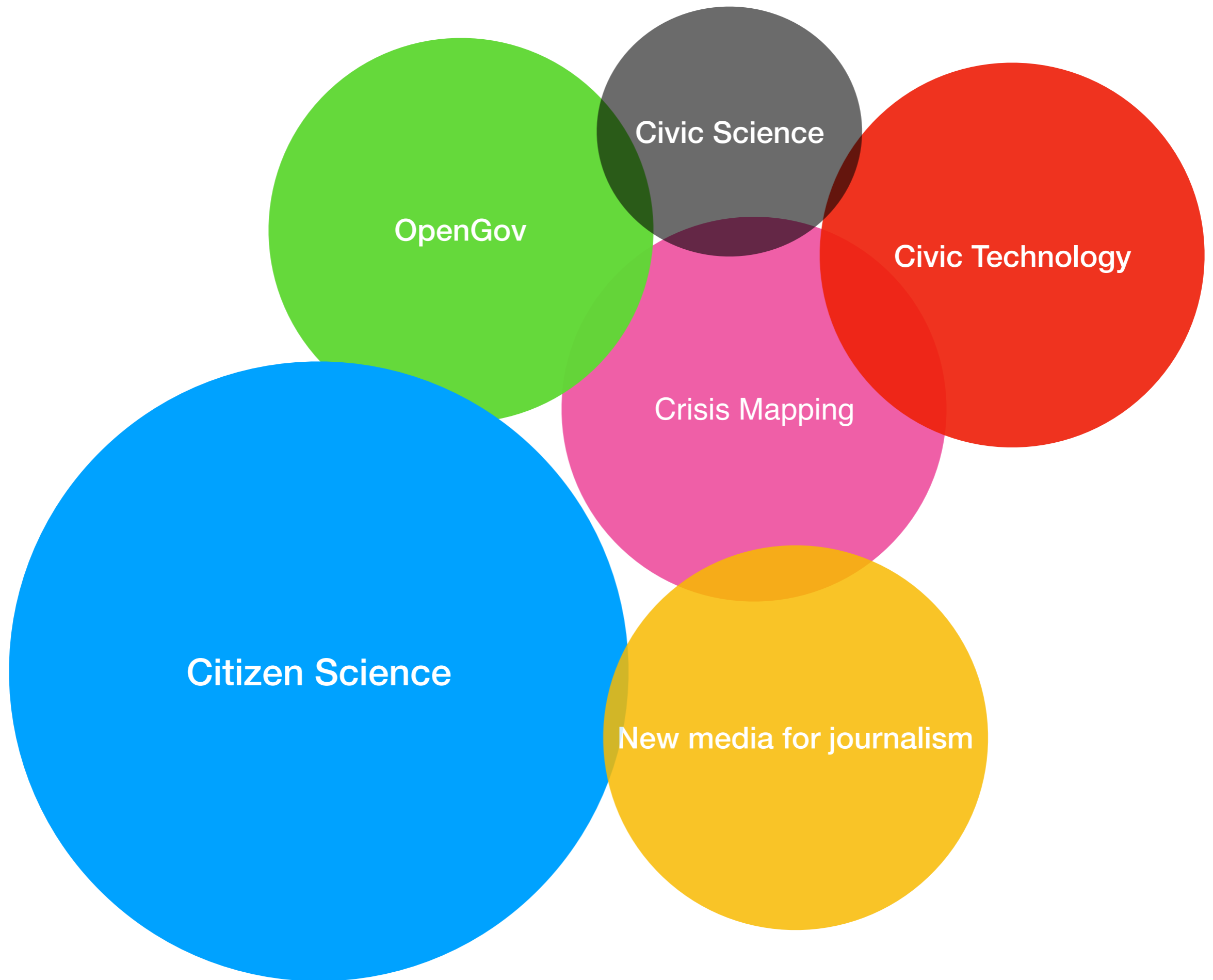
The Gulf Moment











Citizen Science

OpenGov

Civic Science

Civic Technology

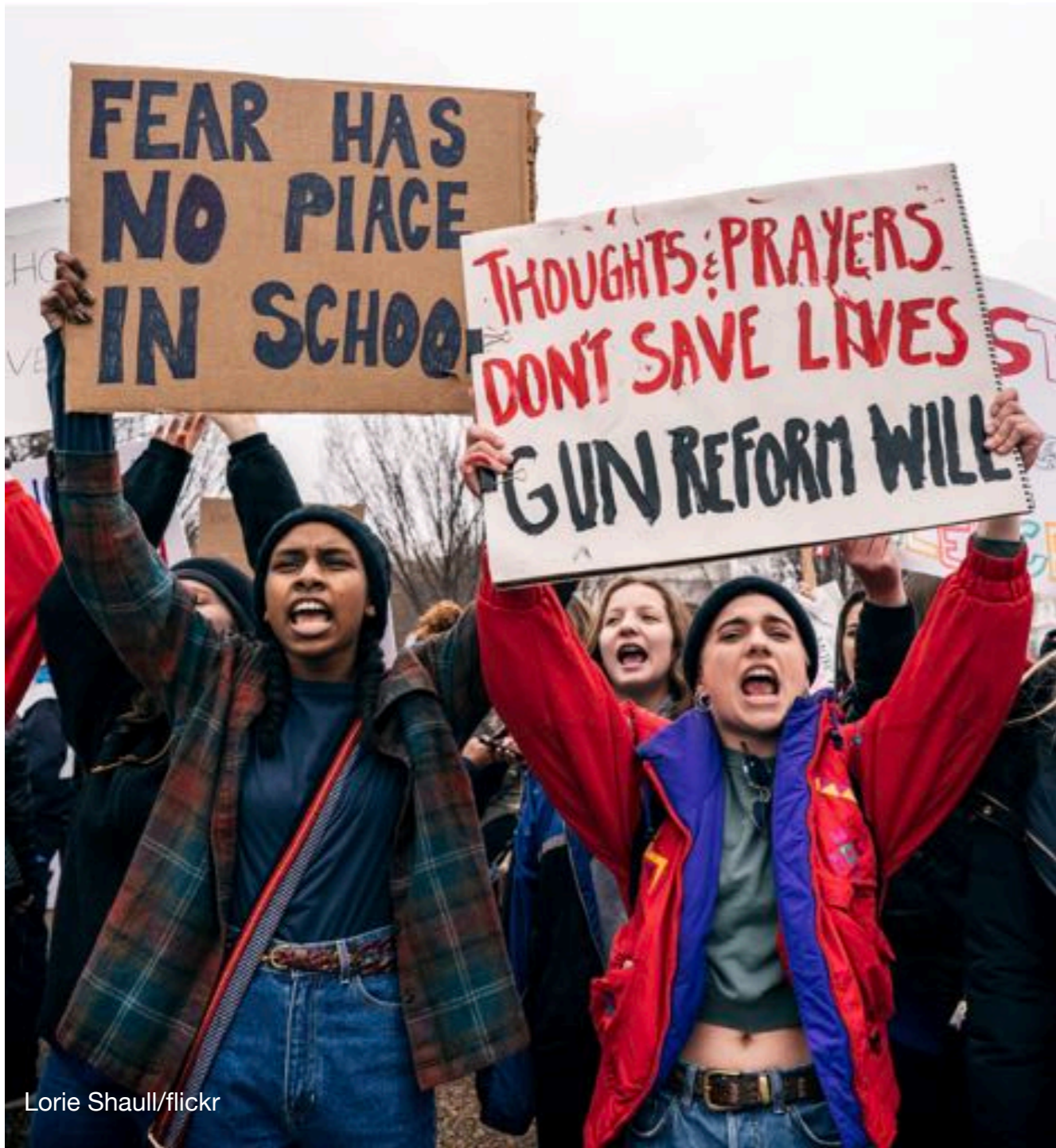
Crisis Mapping

New media for journalism

A complex, multi-colored network map of the Internet, showing a dense web of connections between nodes. The nodes are represented by small, bright, multi-colored dots (red, green, blue, yellow, purple) and are connected by thin, multi-colored lines. The overall appearance is that of a vast, interconnected network. A large, white, 3D-style arrow points from the top left towards the center of the network, highlighting a specific node. The text "You are here" is written in white, sans-serif font to the right of the arrow's tip.

You are here

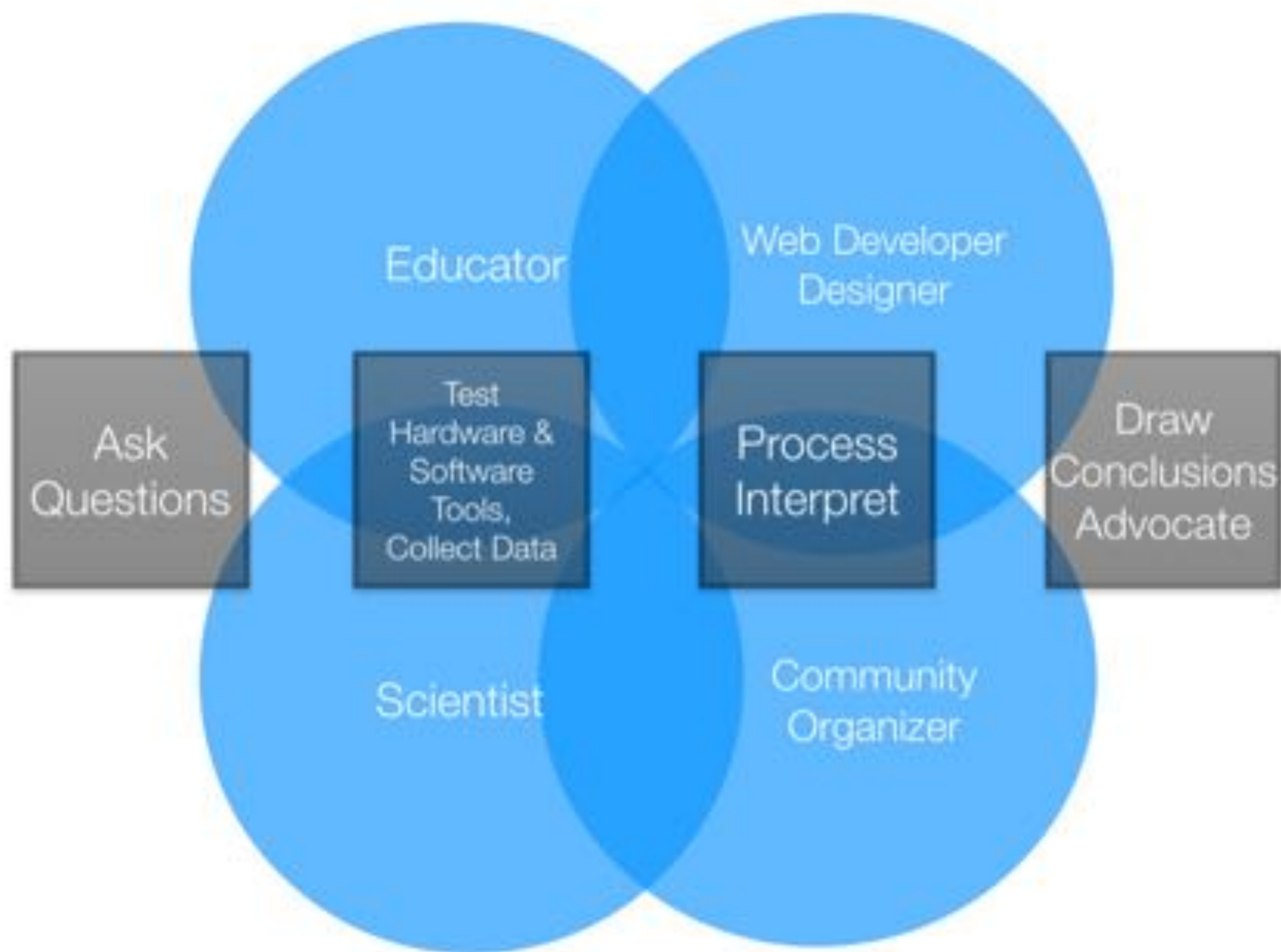
After the BP Spill



Lorie Shaul/flickr



International Bird Rescue Research Center



Educator

Web Developer
Designer

Ask
Questions

Test
Hardware &
Software
Tools,
Collect Data

Process
Interpret

Draw
Conclusions
Advocate

Scientist

Community
Organizer



Research questions are focused on
addressing local questions

and are driven by on-the-ground community work.

UNITED BULK TERMINAL

Conveyor

Plume

Additional Source?

More residual coal under the water in barge



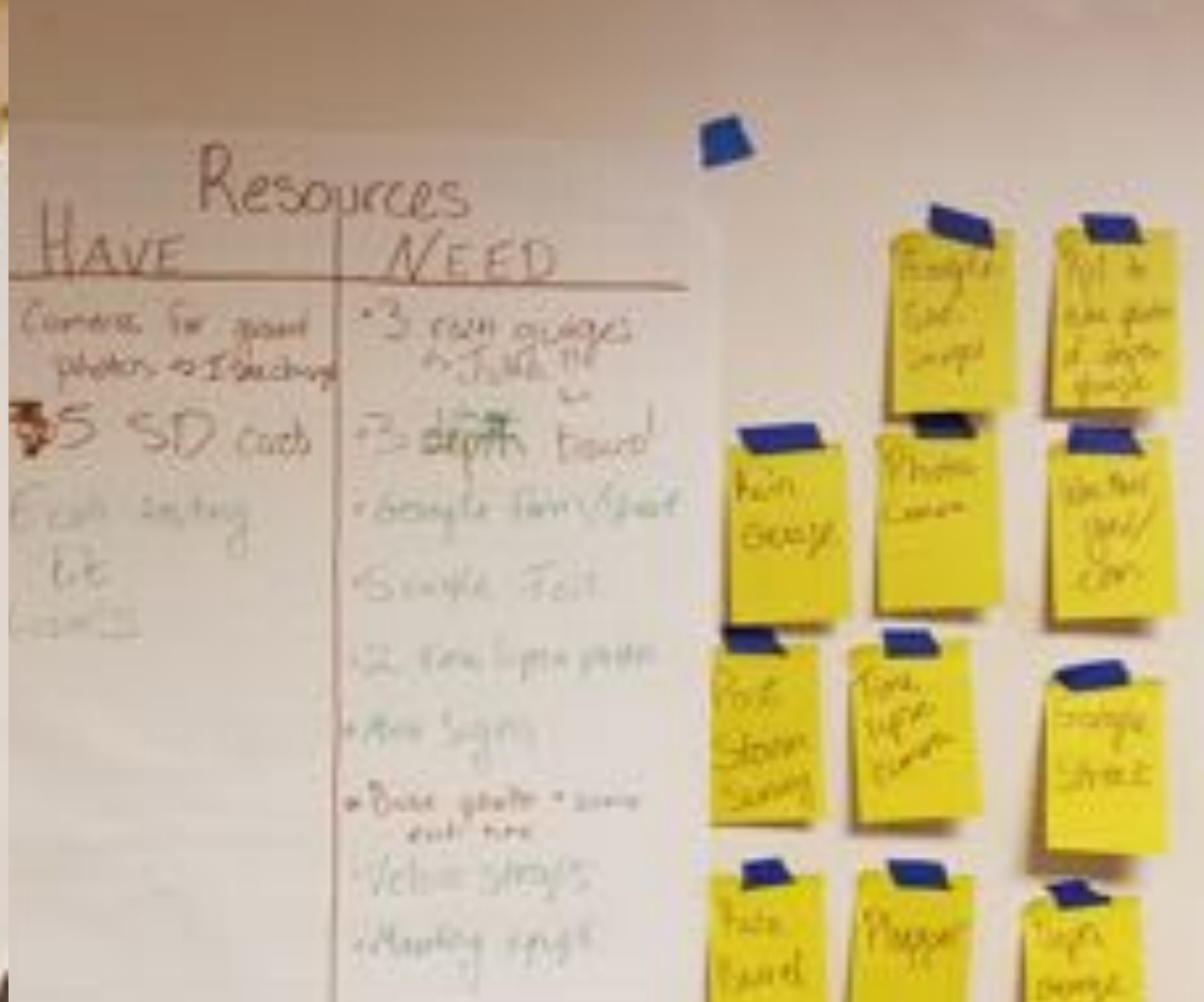






@glennwalquist, Laura Chipley







Citizen Science for the Amazon: Understanding fish migrations across the Amazon

cienciaciudadanaparalaamazonia.org

fieldkit.org

1. Modular Hardware Framework
2. Field collection & Sensor control app
3. Data storage, management & sharing platform

A hand is holding a small, black, rectangular device. Next to it is a smartphone displaying the fieldkit app interface. To the right, a laptop screen shows a data management platform with a map and several line graphs representing sensor data over time.

A screenshot of a mobile application interface. At the top, there is a header with the word "Detalle" and a back arrow. Below the header is a large illustration of a fish, likely a piranha. Underneath the illustration are several data entry fields, including a date field with "18/08" and a time field with "11". There is also a section with a camera icon and a "Guardar" button at the bottom.



Vuela (by Paz Bernaldo, Gustavo Pereyra Irujo, Antoni Perez, Loulou Jude, Alejandrina Egozcue, Nicolás Narváez, Guillermo Pereyra)



ETER (by Julieta Arancio, R'lyeh Hacklab)



Baby Legs (by Civic Laboratory for Environmental Action Research)



Part of growing a self-sustaining peer network is matching asks with offers at scale

Questions

Title	Author	Updated	Likes
Suggestions for a temperature sensor for surface (stone) measurements?	@MadTinker	2 days ago	1
What is your favorite program to plot data from a data logger?	@gretchengehrke	about 1 month ago	1
Can commercially available water sensors work with DIY data loggers?	@gretchengehrke	about 1 month ago	1
What information do I need to assess if a data logger and sensor will be compatible?	@gretchengehrke	about 1 month ago	1
What are ways to record ambient temperature every 5 sec and export easily?	@carohowe	about 1 month ago	1
What would be a good basic activity to test out a data logging device in water?	@stevie	3 months ago	1
Sparkfun data logging troubleshooting?	@efuhrm	3 months ago	2

What we've learned...

A group of people, including children and adults, are gathered in a grassy field. A large orange balloon is visible in the background. One man is kneeling and working with a green object, while others stand around. The scene is outdoors with trees in the background.

1. Engage researchers **not** subjects

2. Pull complexity off the shelf: modify minimally





concealed operator



revealed operator

3. Build in openness & accountability

4. Create collaborative workflows



[Create a map](#)

Log in to create a map, or if you have privacy concerns, you may create a map anonymously

Make maps from aerial photos

- [Learn how](#) [Watch tutorial video](#) [Ask a Question](#)

Welcome to the new MapKnitter 2.0! [Click here](#) to learn more about the new features, and get involved in development.

Search

name or description



Regions

- Gulf Coast
- New York/New Jersey

Recent authors

- rlgene
- jneeh
- jennee
- buppybowl
- jachlegun
- sh
- franko
- stephen08
- jvelling
- marchoat1
- luvess2001
- leemanndavid

Statistics

MapKnitter is hosting 2321 completed maps of an average resolution of 29 cm per pixel. Images average. Currently reporting 0 maps.

Resolutions:

Resolutions:

Maps:

0 maps ————— 40 maps

Images:

Featured | Authors



Map

anonymous | Boston, MA, USA
Updated 11 Jul 18:48 | 0 images | 0 comments



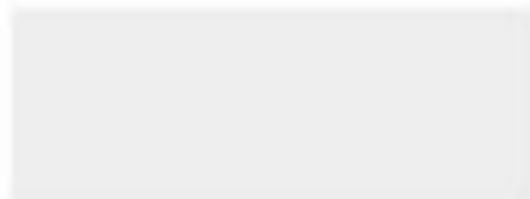
Sittou river

anonymous | Sittou River, Belize
Updated 11 Jul 10:58 | 18 images | 0 comments



The corner of church and valley

By rlgene | 1811 Church St, San Francisco, CA 94131, USA
Updated 11 Jul 03:09 | 48 images | 0 comments

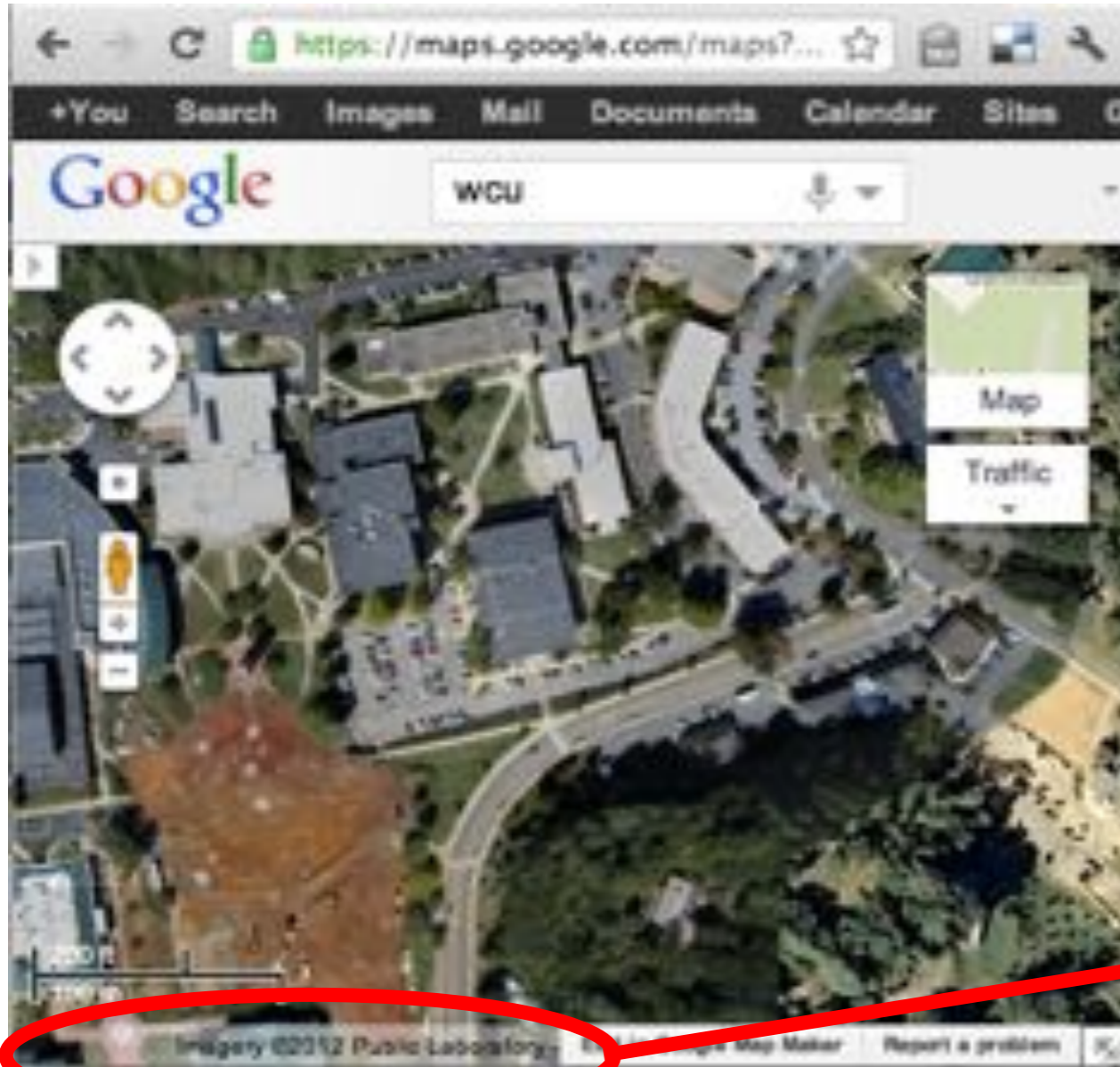


Pfrrr

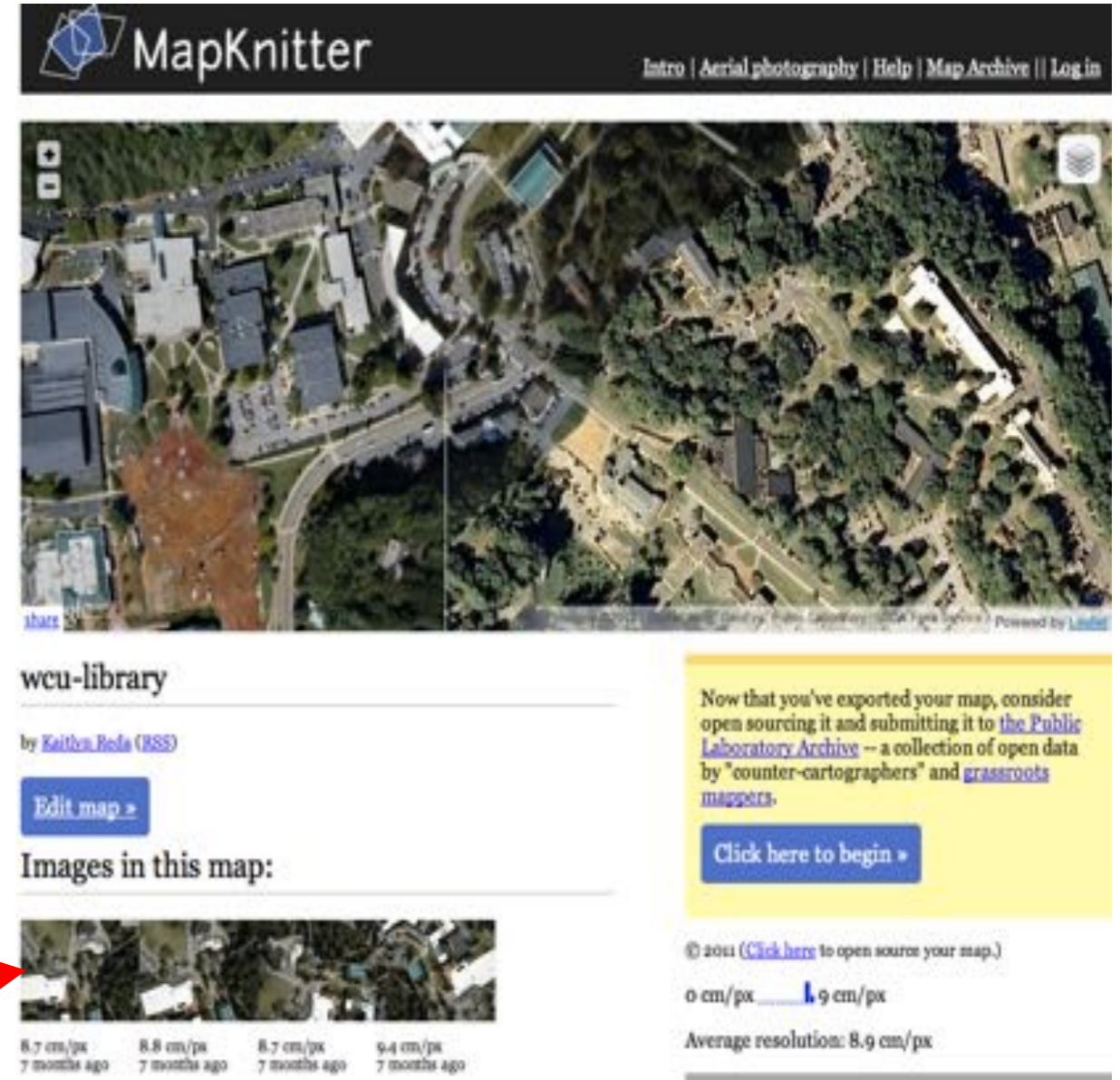
anonymous | Honolulu, HI, USA
Updated 08 Jul 04:07 | 0 images | 0 comments



5. Maintain public data archives

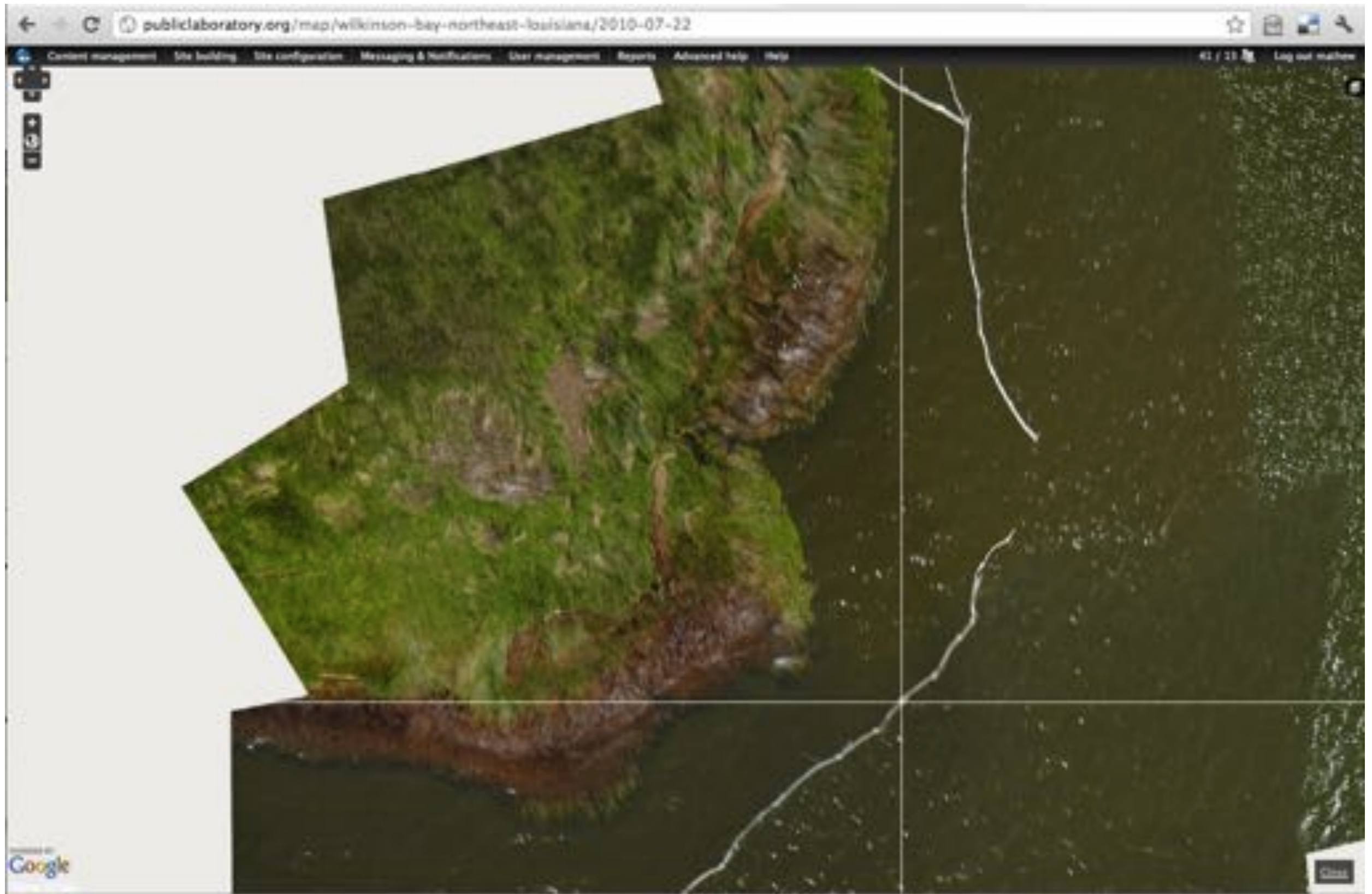


See © Public Laboratory



Find the mapmaker & images

6. Mainstream true accountability



7. Let images communicate complexity



CERN Open Hardware 1.1
Share Back with Attribution



Creative Commons
Share Alike with
Attribution For Media



GNU Public License
3.0
Copyleft Viral Software
Licensing

8. Protect openness with viral licensing



9. Create locally

People Centered Science



Mark Tseng-Putterman

@tsengputterman

Folgen



10:24 - 3. Mai 2018

751 Retweets 2.287 „Gefällt mir“-Angaben

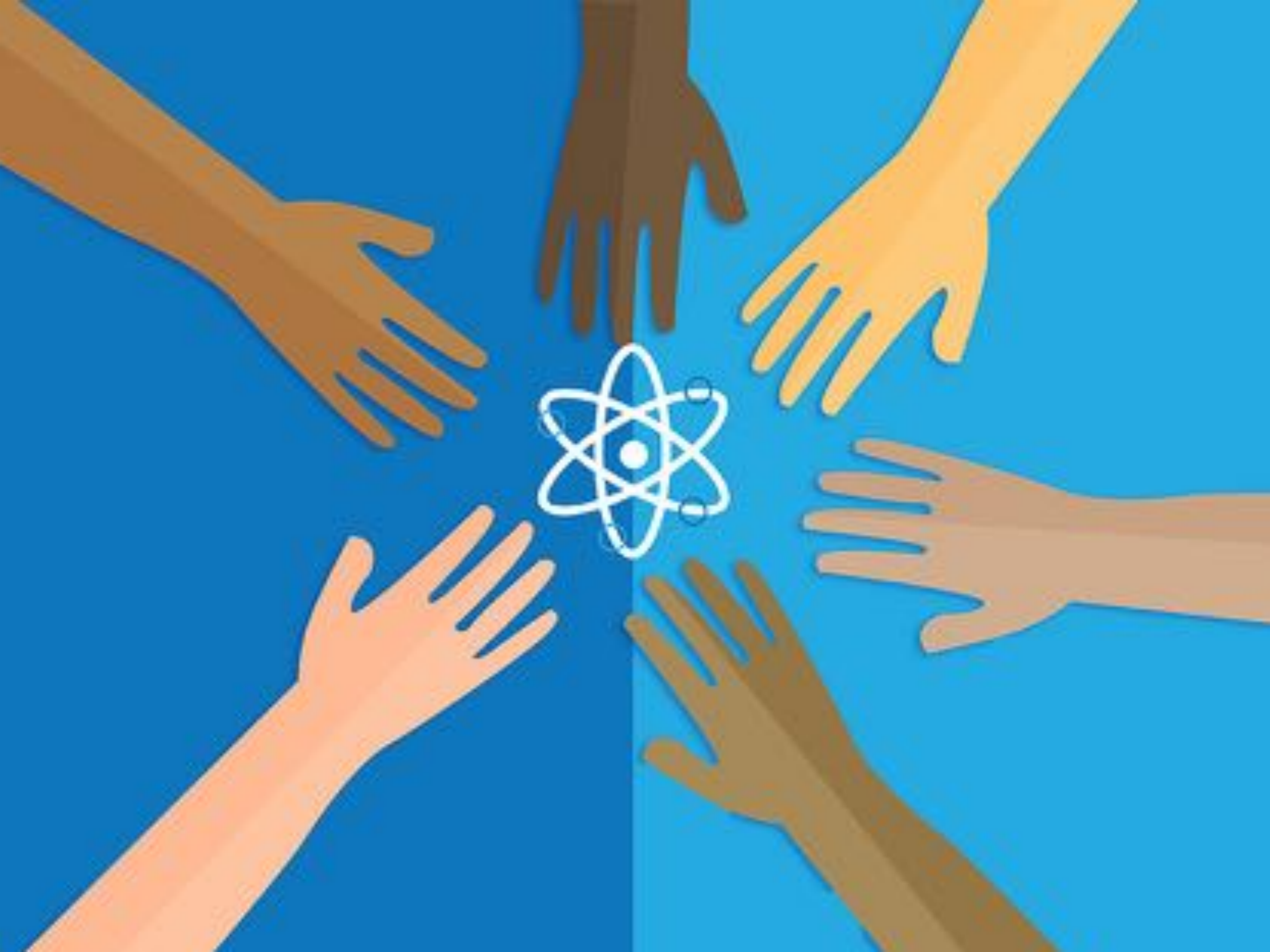


9

751

2,3 Tsd.





GOSH Manifesto

[English](#) | [Español](#) | [Français](#) | [Português](#) | [中文](#) | [বাংলা](#) | [日本語](#)

The Global Open Science Hardware (GOSH) movement seeks to reduce barriers betw users of scientific tools to support the pursuit and growth of knowledge. These are c

- ▼ **GOSH is accessible**
- ▼ **GOSH makes science better**
- ▼ **GOSH is ethical**
- ▼ **GOSH changes the culture of science**
- ▼ **GOSH democratizes science**
- ▼ **GOSH has no high priests**
- ▼ **GOSH empowers people**
- ▼ **GOSH has no black boxes**
- ▼ **GOSH is impactful tools**
- ▼ **GOSH allows multiple futures for science**

Public Lab Code of Conduct ☺

Public Lab, PO Box 426113, Cambridge, MA 02142

We are coming together with an intent to care for ourselves and one another. We want to nurture a compassionate democratic culture where responsibility is shared. We -- visitors, community members, community moderators, staff, organizers, sponsors, and all others -- hold ourselves accountable to the same values regardless of position or experience. For this to work for everybody, individual decisions will not be allowed to run counter to the welfare of other people. This community aspires to be a respectful place both during online and in-person interactions so that all people are able to fully participate with their dignity intact. This document is a piece of the culture we're creating.

This code of conduct applies to all spaces managed by the Public Lab community and non-profit, both online and in person. It was written by the Conduct Committee (formed in 2015 during Public Lab's annual conference "The Barnraising") and facilitated by staff to provide a clear set of practical guidelines for multi-day events such as Barnraisings, events led by organizers and community members, and online venues such as the website, comment threads on software platforms, chatrooms, our mailing lists, the issue tracker, and any other forums created by Public Lab which the community uses for communication.

We come from all kinds of backgrounds ☺

Our community is best when we fully invite and include participants from a wide range of backgrounds. We specifically design spaces to be welcoming and accessible to newcomers and folks from underrepresented groups. Public Lab is dedicated to providing a harassment-free, safe, and inclusive experience for everyone, regardless of personal and professional background, gender, gender identity and expression, style of clothing, sexual orientation, dis-/ability, physical appearance, body size, race, class, age, or religion. Public Lab resists and rejects: racism, sexism, ableism, ageism, homophobia, transphobia, body shaming, religion shaming, "geekier-than-thou" shaming, education bias, the shaming of people nursing children, and the dismissal or bullying of children or adults.

We do not tolerate harassment or shaming ☺

While we operate under the assumption that all people involved with Public Lab subscribe to the basic understanding laid out above, we take these issues very seriously and think they should, in general, be taken seriously. Therefore, individuals who violate this Code both in and outside of Public Lab spaces may affect their ability to participate in Public Lab ranging from temporarily being placed into online moderation to, as a last resort, expulsion from the community. If you have any questions about our commitment to this framework and/or if you are unsure about aspects of it, email conduct@publiclab.org and we will do our best to provide clarification.

How It Works ☺

Sometimes things go wrong. When a situation is uncomfortable, hurtful, exclusionary, or upsetting, there is a problem that should be addressed. This code of conduct is an effort to maintain a safe space for everyone, and to talk about what might happen if that space is compromised. Please see additional guidelines below for community behavior on how we expect people to interact with one another.

Considerations for all of our work (regardless of what we label it):

- Build relationships based on equity* from the beginning (resource distribution, ownership of processes and data)
- Honor different types of expertise, local knowledge and experience
- Consider the many places where collaboration can happen
- Leverage scientific knowledge to help distribute power
- Think critically about the use of terms such as “inclusion” and “empowerment”. Co-opting people and their work can create friction.
- Move beyond feedback loops and step into solution finding
- Address tech-solutionism before it becomes a problem

**Why equity? Equality is treating everyone exactly the same, while equity starts from the idea that people/groups start from different social, political and economic positions and strives to address this unevenness.*

Learn more at

PublicLab.org

@PublicLab | @sdosemagen