

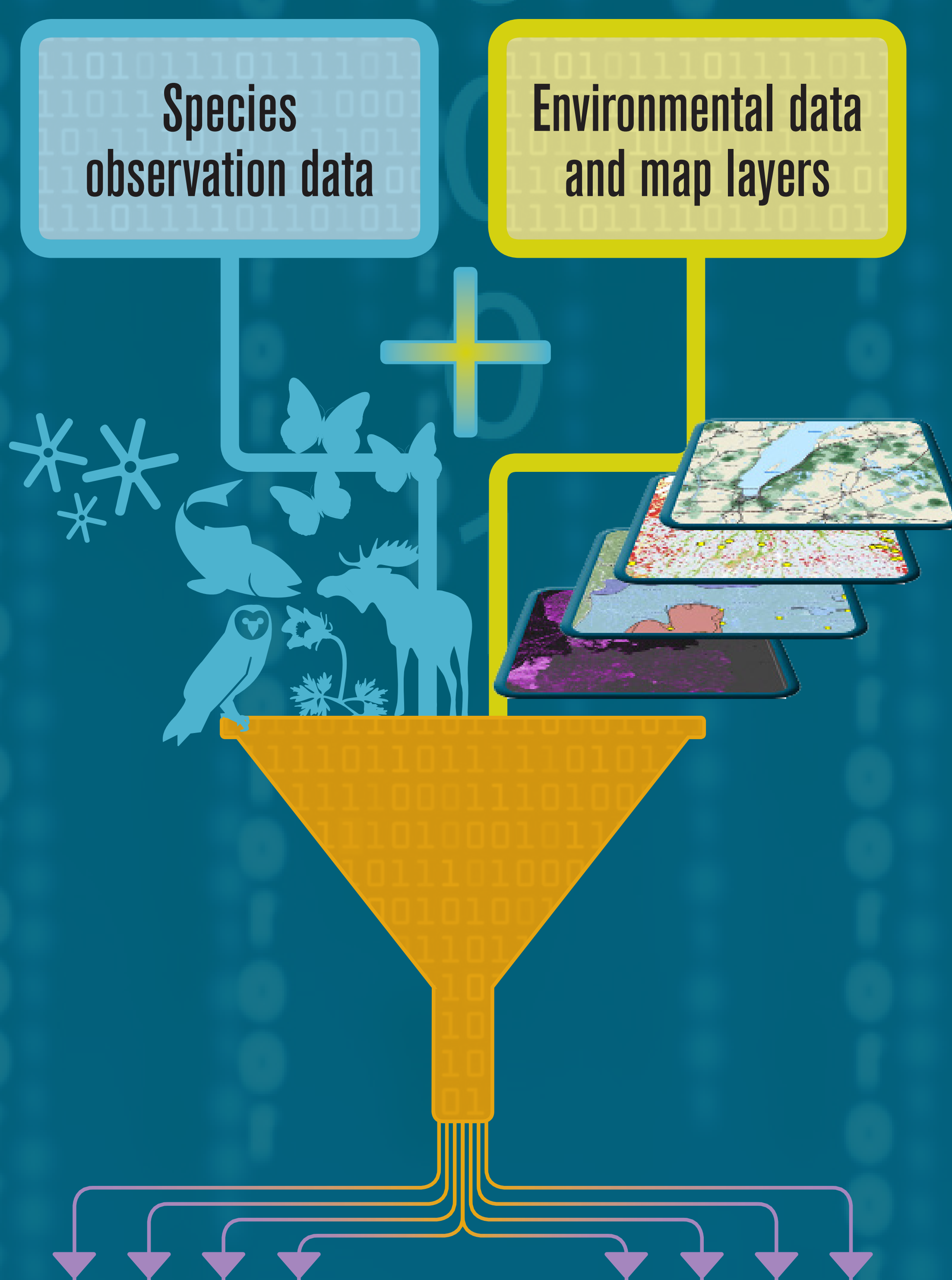
The planning and conservation tool Analysis portal

Swedish LifeWatch is an e-infrastructure for biological data and connects together in one network different databases. Here you can search effectively data from Artportalen and other resources in the Analysis Portal website.

Over 75 million species observations

Via the Analysis Portal can you search amongst Artportalen and 14 other databases including:

- Marine environmental monitoring from SMHI (SHARK)
- Wireless Remote Animal Monitoring (WRAM)
- Bird ringing centre in Sweden via GBIF
- Observation database of Redlisted species
- Entomological Collections (NHRS) from GBIF
- Swedish Virtual Herbarium
- The National Register of Survey test-fishing
- Environmental Data MWM



You can do this

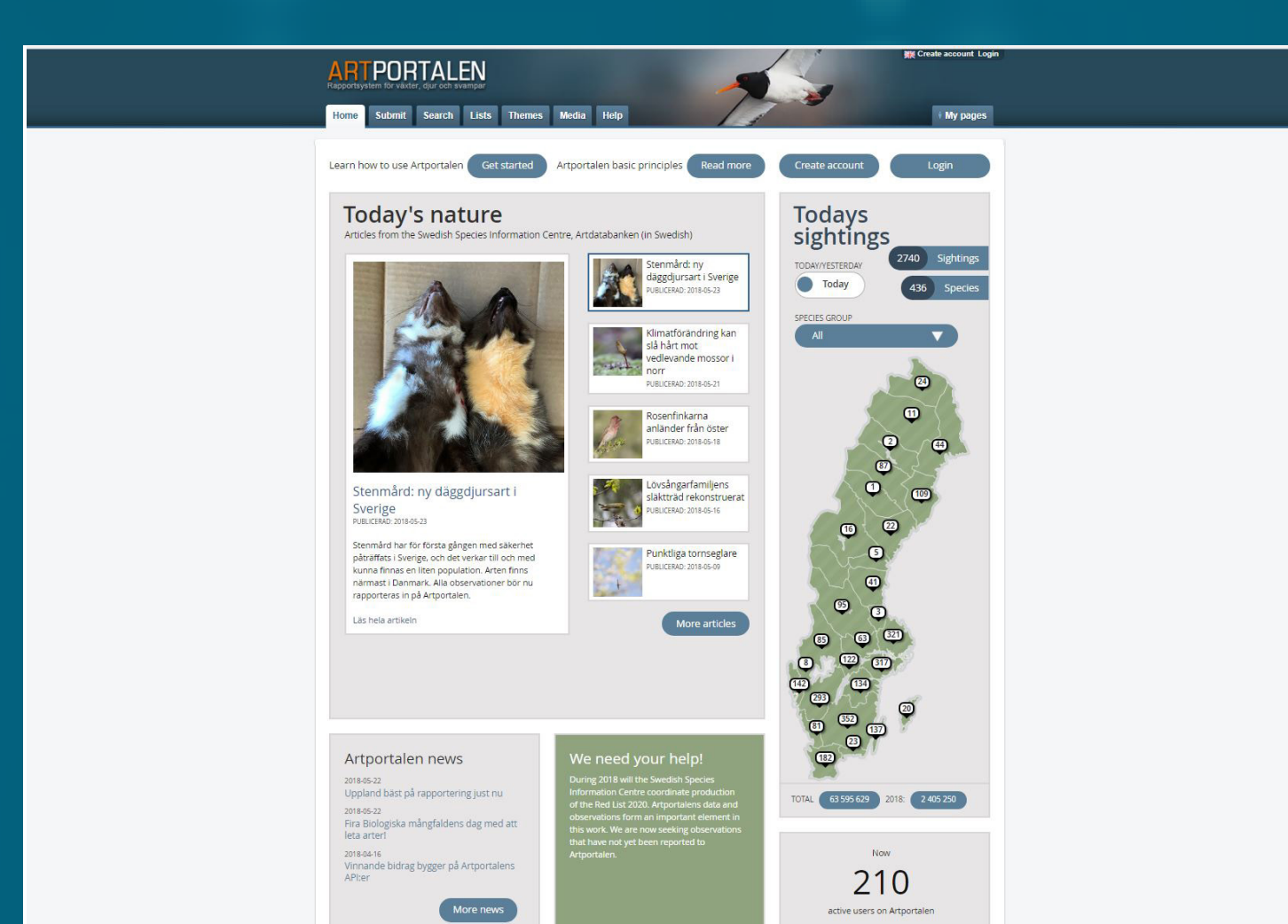
In the Analysis Portal you can filter species observation data, for example source (database), taxon, time, period, geographical distribution, location accuracy, as well as combine different map layers. Data can be visualized in a variety of ways or download.

Users

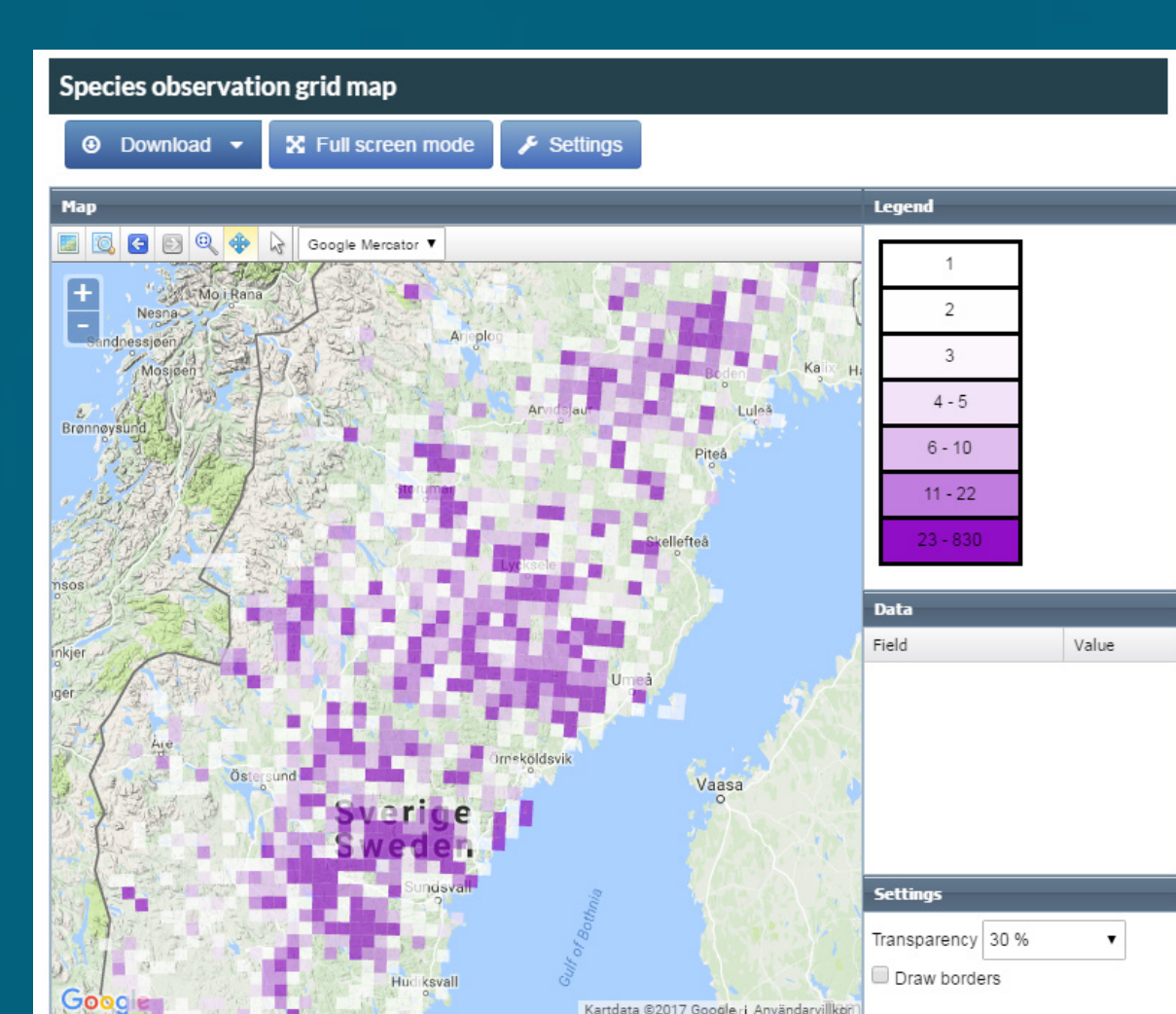
A. Authorities and agencies use the data for environmental management purposes and either access data directly from Artportalen or have developed their own specific interfaces to the Analysis Portal.

B. Swedish Forestry Agency.

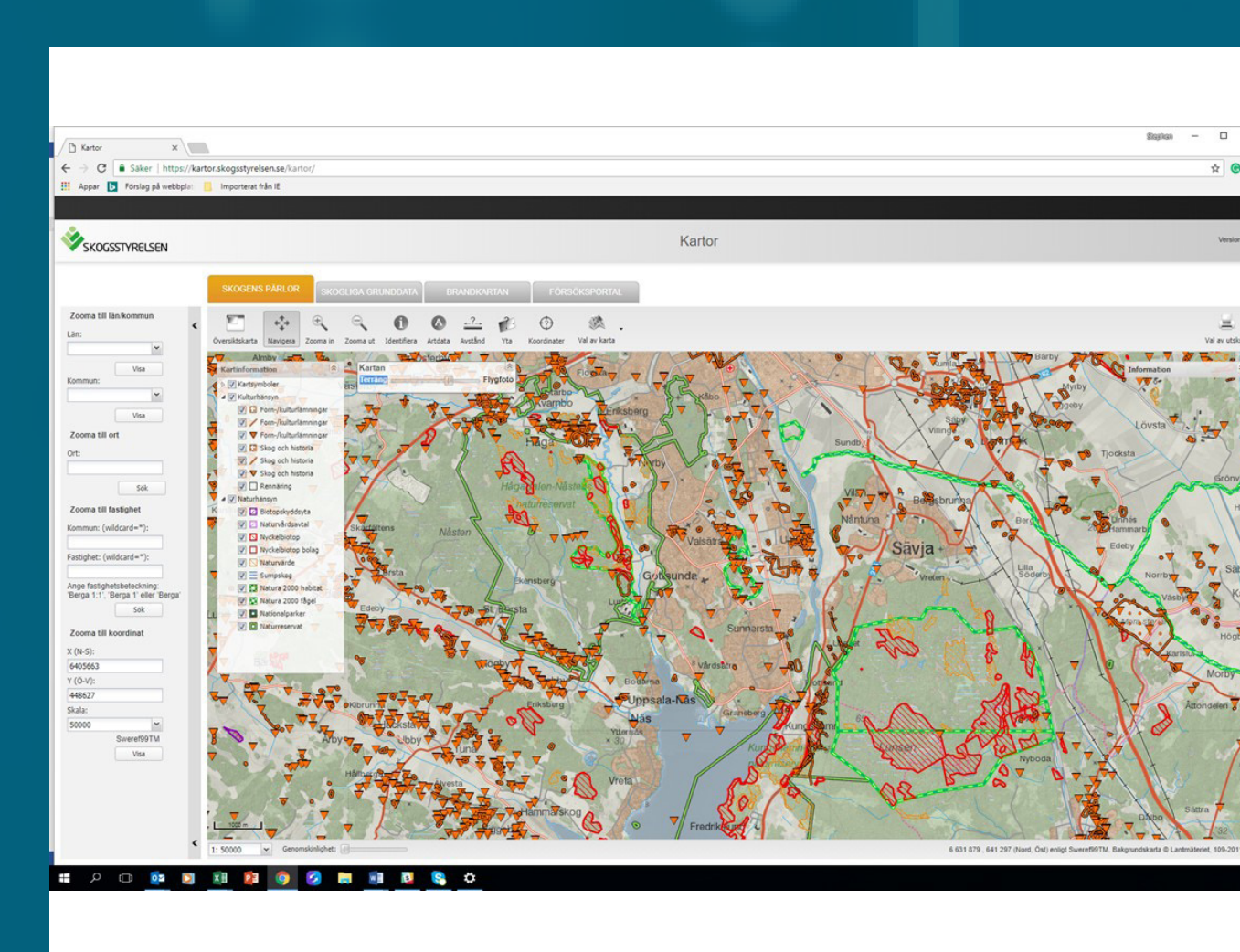
C. County Councils.



A. Authorities and agencies



B. Swedish Forestry Agency



C. County Councils