

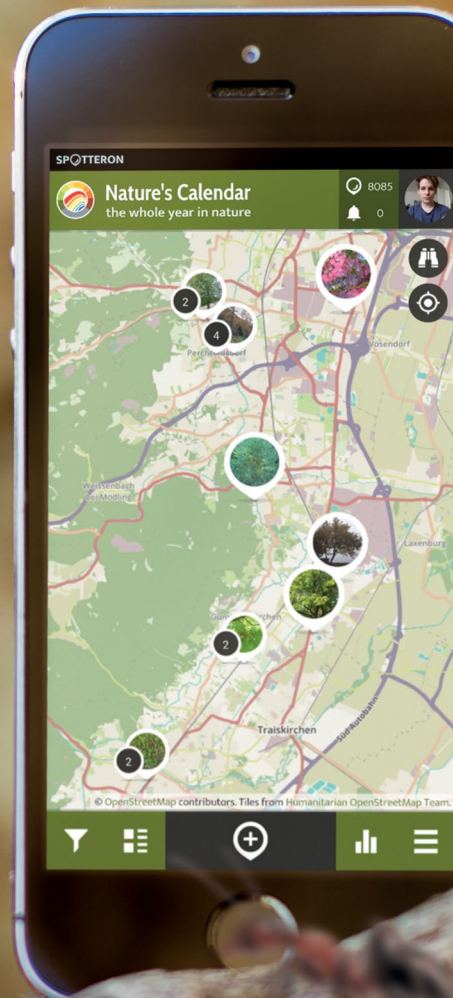
SPOTTERON

CITIZEN SCIENCE

SMART APPS FOR PROJECTS

SCIENTISTS & CITIZENS
Bringing two sides together.

SOCIAL CITIZEN SCIENCE
Let's build a community!



www.spotteron.net

Our world is changing.

On the one hand we are facing environmental decline and a decreasing interest in nature, on the other hand we've achieved a level of mobility like never before.

Especially in smartphone applications, youth and elder alike share moments and communicate on a daily basis. In our work, we want to utilize this technological reality to involve people in science and nature.

With our long-term experience as professional designers, we created a platform named SPOTTERON, which brings mobile apps and modern design to interactive science projects.



Philipp J. Hummer, SPOTTERON DESIGN

WHAT IS CITIZEN SCIENCE?

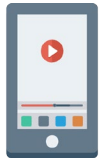
Citizen Science is a scientific method, which involves citizens in science projects. Forms of participation can range from monitoring to crowdsourced analysis and is often done by enthusiasts.



IMAGINE IF CITIZEN SCIENCE BRINGS CITIZENS AND SCIENTISTS TOGETHER

As a symbiosis between scientific research and user participation, Citizen Science can reach out to the public while supporting mutual learning. If not being used just as a tool for crowdsourced data collection, it can connect and immerse people in a project.

MODERN CITIZEN SCIENCE IS



mobile first



well designed

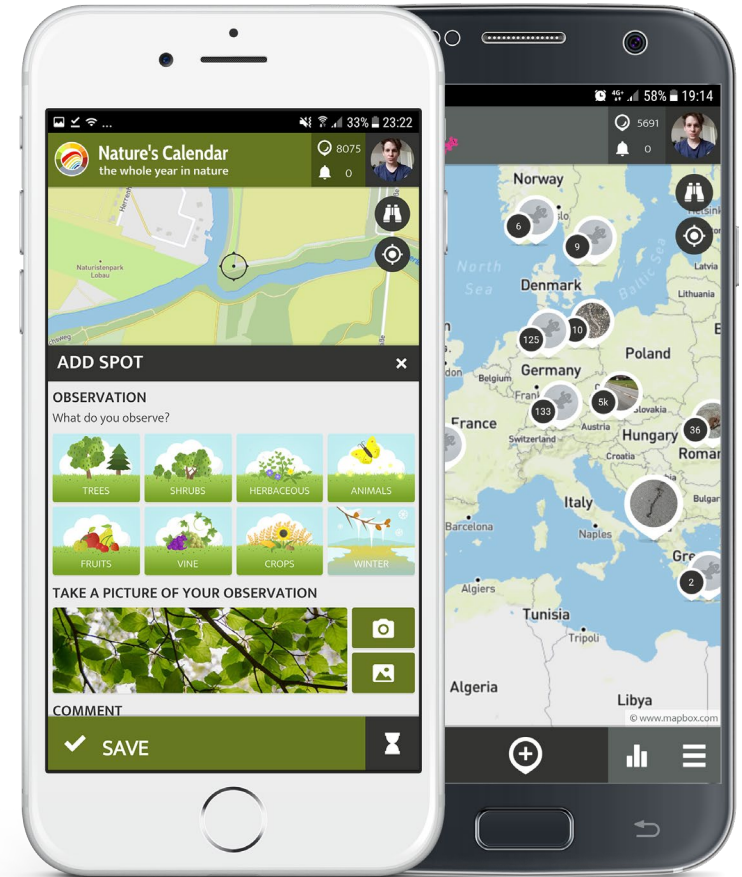


always updated



social & interactive

In **SPOTTERON**, we follow these important concepts to provide custom smartphone apps and interactive online maps for new and also already running Citizen Science projects.



SPOTTERON PLATFORM

MOBILE CITIZEN SCIENCE



WHAT CAN WE DO FOR YOUR PROJECT?

SPOTTERON IS A COMPLETE SOLUTION



Running a Citizen Science project needs the right tools.
The SPOTTERON platform provides a complete solution for your Citizen Science projects in an online environment.

We also take care of all the setup and necessary media for the app stores. During the whole project runtime, we support and update the apps and interactive maps on a regular basis.

EVERY PROJECT IN SPOTTERON INCLUDES:



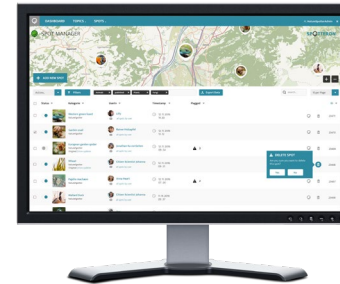
SMARTPHONE APPS

Custom apps for Android and iPhones with all SPOTTERON platform features



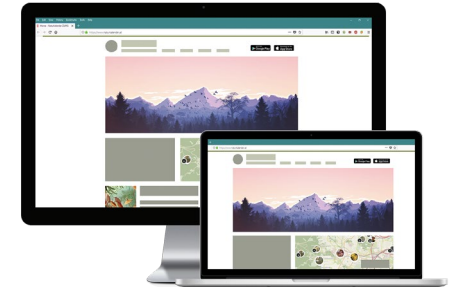
INTERACTIVE MAPS

Desktop maps for your own project homepage with full functionality.



ADMINISTRATION

Intuitive admin interface for maintenance and data download.



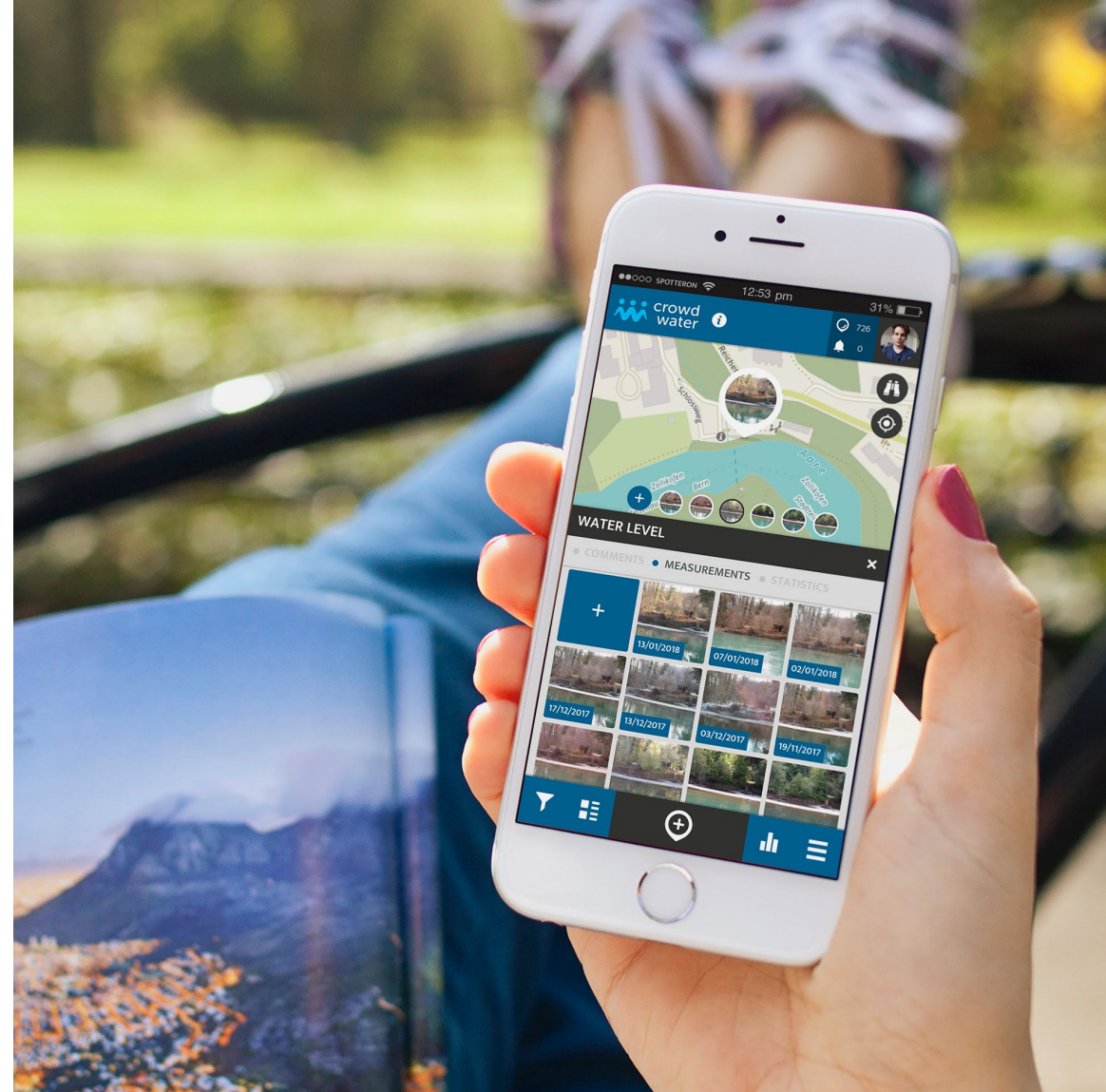
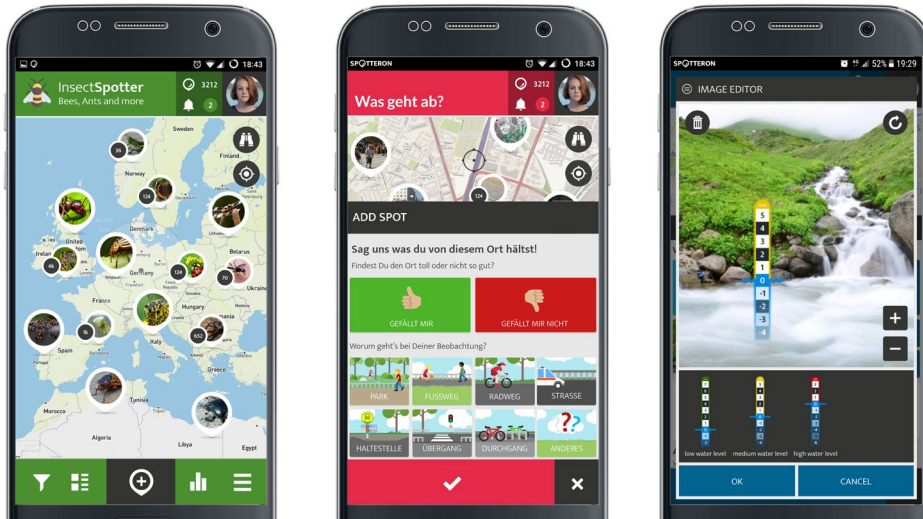
Optional: PROJECT WEBSITE

CMS based website with high quality design for desktop and mobile

APP CUSTOMIZATION

FLEXIBLE FOR ALL GEO RELATED PROJECTS

Every Citizen Science project is individual, so we've built SPOTTERON with modularity and flexibility in mind. The structure, feature set, questionnaire, look & feel and branding can all be adjusted for your project's needs. Current project partners come from a wide range of scientific fields., the common basis is just that the Citizen Science apps use GEO coordinates for data submission.





BY CITIZEN SCIENTISTS
FOR CITIZEN SCIENCE

SOCIAL CITIZEN SCIENCE BUILDING THE COMMUNITY TOGETHER

An important factor for long-term motivation and user immersion are social features. This also applies strongly to Citizen Science apps.

Together with universities and NGOs across Europe we've built a full feature set for the Citizen Science community, including:



User profiles



Newsfeed



Following



Liking

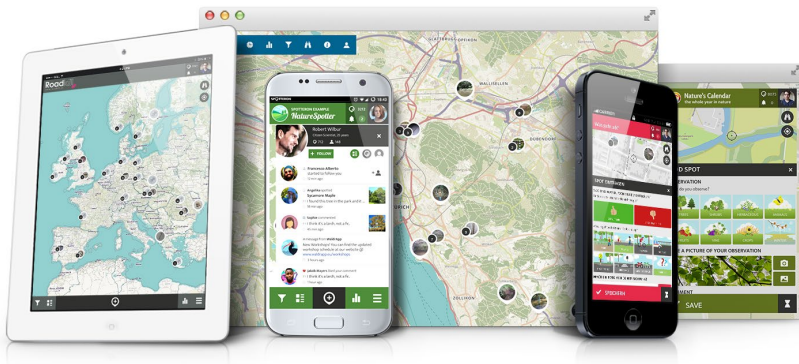


Comments



Push messaging

FIND OUT MORE
@ www.spotteron.net



SPOTTERON

email: office@spotteron.net

skype: spotteron

phone: +43-676-598-2272

 facebook.com/spotteron

 twitter.com/spotteron

 instagram.com/spotteron

www.spotteron.net



**EXAMPLE PROJECTS
ARE AVAILABLE AT**
www.spotteron.net/apps