

Eye for Diabetes



Citizen scientists help to label retina images from a public dataset via the Zooniverse platform

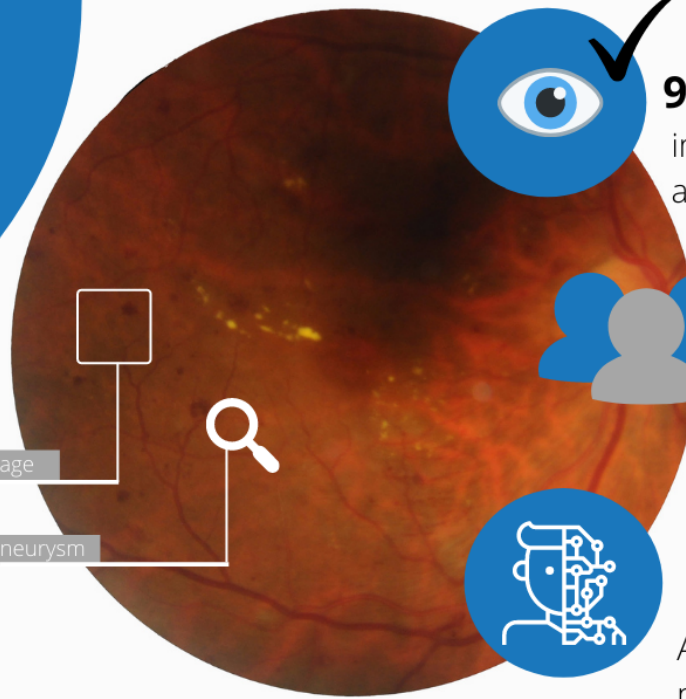


Developing and training a computer model based on artificial intelligence to detect diabetic retinopathy in retina images

425 million people
with diabetes in the world

1 out of 3
can get an eye complication

Increase in eye screening tests
Computer-assisted screening



95.000
images have been analysed



7.500
volunteers



Automated lesion detection is now **50%** more accurate

Next steps

Further training of the computer model with more labelled images by volunteers

Faster and more reliable diagnoses for large-scale individualised health care

Usage of AI in citizen science: surveying attitudes and opinions



Eye for diabetes

September 2018 - February 2020

Website: eyefordiabetes.health

Contact: carina.veeckman@imec.be